

Infection Prevention Office Hours

4/28/2023

Candida auris: Part Two



LONG TERM
CARE RESOURCE
COLLABORATIVE

SOUTH CENTRAL
LTC RISE

Agenda

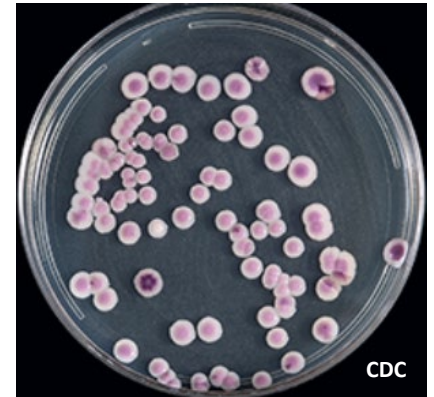
- **Introductions**
- **C. auris – A Recap from Part One**
- **Key Points and Lessons Learned from the PA DOH**
- **Q + A and Open Forum**



Candida auris - A Recap

***Candida auris* (*C. auris*) is an emerging fungal threat.**

- It can cause invasive, severe disease and has caused outbreaks in healthcare settings
- It is hard to treat and often multidrug-resistant
- It may be difficult to identify by laboratories without specific technology
- It is spread by **CONTACT** transmission
 - May spread by contact with an infected individual and/or contact with a contaminated surface
 - Effective hand hygiene is PARAMOUNT
 - Contact, Modified Contact OR Enhanced Barrier Precautions are indicated for LTC
- Disinfectants with a *C. auris* kill claim (List P) should be used for cleaning and disinfection
 - If one with a *C. auris* claim is not available, use one with a *C. diff* kill claim until product can be obtained
- Residents with both active infection OR colonization can spread *C. auris*
- It is pertinent to communicate *C. auris* status when transferring the resident to another location
- The DOH are key partners to support and guide you on management of a resident with *C. auris*
- Education to both staff and residents is a key piece in preventing the spread of *C. auris*



C. auris Preparedness - A Recap

✓ Situational Awareness

- PA Health Alert Network (PA HAN)
- CDC and PA DOH Toolkits
- Regional Healthcare coalition
- Laboratory testing capabilities

✓ Staff Education and Monitoring

- C. auris*- detection, testing, transmission, prevention
- PPE donning/ doffing
- Importance of HH
- Importance of cleaning and disinfecting (room, shared equipment, communal space)

✓ Communication

- Local/ State DOH contacts if a case is identified (do you have the contacts?)
- Communication plan for residents/families/visitors as needed
- Communication plan (transfer form) if a patient must be transferred elsewhere (specialist, acute care, etc.)

✓ Environment of Care (EOC)

- Disinfectant Products with a *C. auris* kill claim
- Clarity on processes to maintain a safe EOC
- Isolation signage and PPE readily available

✓ A Plan

- Do you have a policy?
- If a case has been identified in your facility, where to start?
- If a case is being admitted/returned to your facility, where to start?
- Remember: Containing (isolate in private room) and consulting your local or state DOH is the first step!

****Prompt consultation with DOH will help facilities determine appropriate Transmission based precautions for resident***



WELCOME, JULIE! Thank you for joining us and sharing this wonderful resource!

(The presentation you see below will be shared with this group after today's IP office hours)



Preventing and Containing *Candida auris* in Pennsylvania Healthcare Facilities

PA Healthcare System/Coalition
Statewide Information Update
April 25, 2023

Julie Paoline, MA, CPHA, CIC, FAPIC
Public Health Specialist Supervisor



Let's Discuss!

Q + A

1. If our community has a positive test, will we need to test staff and residents who are close contacts?
2. What determines a close contact for *C. auris*?
3. How do we go about detecting BOTH colonized OR active cases in the LTC setting? Who to suspect and how to order testing?
4. What are specific questions we should be asking our labs to determine if they can detect *C. auris*?
5. Do you think decolonization will ever be an option for *C. auris*?
6. Can you give a specific example of how DOH has helped/supported a facility in the past with *C. auris*?

Do you have any additional questions?

References and Helpful Resources

- Identification of *C. auris*: <https://www.cdc.gov/fungal/candida-auris/identification.html>
- CDC Key Definitions: [Candida auris | Candida auris | Fungal Diseases | CDC](#)
- Guidelines for Environmental Infection Control in Healthcare Facilities: <https://www.cdc.gov/infectioncontrol/guidelines/index.html>
- EPA Registered Disinfectants List P : [List P: Antimicrobial Products Registered with EPA for Claims Against Candida Auris | US EPA](#)
- *C. auris* fact sheet : [Drug-Resistant Candida Auris \(cdc.gov\)](#)
- Enhanced barrier precautions : [Frequently Asked Questions \(FAQs\) about Enhanced Barrier Precautions in Nursing Homes | HAI | CDC](#)
- PA DOH *C. auris* Toolkit : <https://www.health.pa.gov/topics/Documents/Programs/HAIP-AS/C.%20auris%20Toolkit%20-%20Healthcare%20Facilities.pdf>
- Comparison Chart (standard vs. contact vs. enhanced) : <https://www.cdc.gov/hai/containment/PPE-Nursing-Homes.html>