

South Central Long-Term Care RISE

Resiliency, Infrastructure, Support & Empowerment

Office Hours

November 17, 2023



**LONG TERM
CARE** RESOURCE
COLLABORATIVE

SOUTH CENTRAL
LTC RISE



PennState
College of Medicine



AGENDA

- COVID-19, RSV and Influenza Data
- Reminders & Opportunities
 - STARR program
 - ECRI Escape Rooms
 - IP Office Hours
 - IP Geek
 - Vizient SCOR survey
 - ECHO
 - Messiah University
 - P2P Network
 - Fast Form



SITUATIONAL AWARENESS

SOUTH CENTRAL REGION

LTC RISE Counties with Outbreaks						
	Outbreaks	Percent of Facilities in County with Outbreak	PCH	SNF	Total in County	Outbreaks Previous Week
Bedford	0	0%	3	2	5	0
Blair	5	19%	16	10	26	4
Mifflin	1	20%	2	3	5	1
Huntingdon	2	40%	2	3	5	2
Fulton	0	0%	1	1	2	1
Juniata	0	0%	5	3	8	0
Perry	1	25%	1	3	4	0
Cumberland	8	20%	24	17	41	8
Franklin	3	10%	20	9	29	4
Adams	3	18%	11	6	17	2
Dauphin	1	3%	22	9	31	1
York	3	7%	30	16	46	1
Lebanon	5	17%	19	11	30	4
Total	32	13%	156	93	249	28
Total Facilities (PCH and SNF)				249		

SOUTH CENTRAL REGION- COUNTY COVID NEW HOSPITAL ADMISSION RATES ON 11/16/23: CDC DATA TRACKER

COUNTY	NEW HOSPITAL ADMISSIONS PAST WEEK	RATE PER 100,000 POPULATION
ADAMS	31	3.8
BEDFORD	38	10.2
BLAIR	38	10.2
CUMBERLAND	47	6.5
DAUPHIN	47	6.5
FRANKLIN	10	3.1
FULTON	10	3.1
HUNTINGDON	3	2.6
JUNIATA	3	2.6
LEBANON	47	6.5
MIFFLIN	3	2.6
PERRY	47	6.5
YORK	31	3.8

Last Updated 11/16/2023

Weekly Summary of Influenza and Respiratory Syncytial Virus (RSV) in Pennsylvania, 2023-2024 Respiratory Virus Season

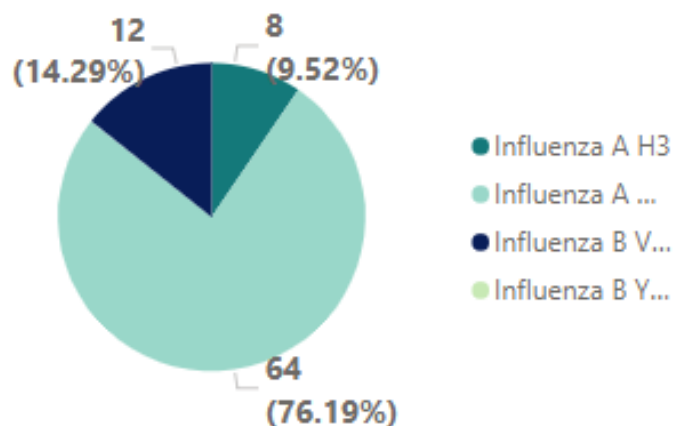


Data Through 11/11/2023

Important Note

This tab displays case counts for respiratory virus diseases that are currently reportable in Pennsylvania, i.e. influenza and RSV. COVID-19 is no longer reportable in PA since the national Public Health Emergency ended on May 11, 2023. Note that information on more severe COVID-19 infections can be

Influenza Subtyping at the Public Health Lab 10/1/23 through 11/11/2023

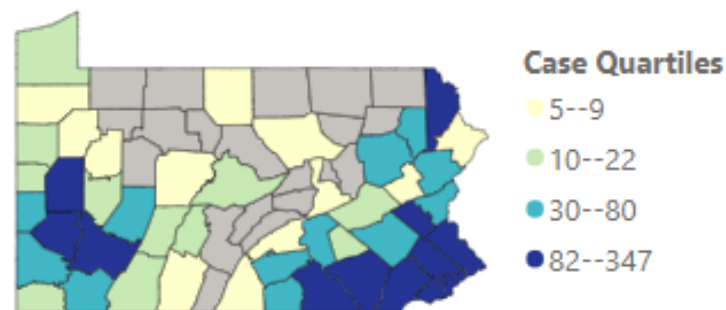


- Virus
- Influenza (All Types)
 - RSV (All Types)

CASES

RATES

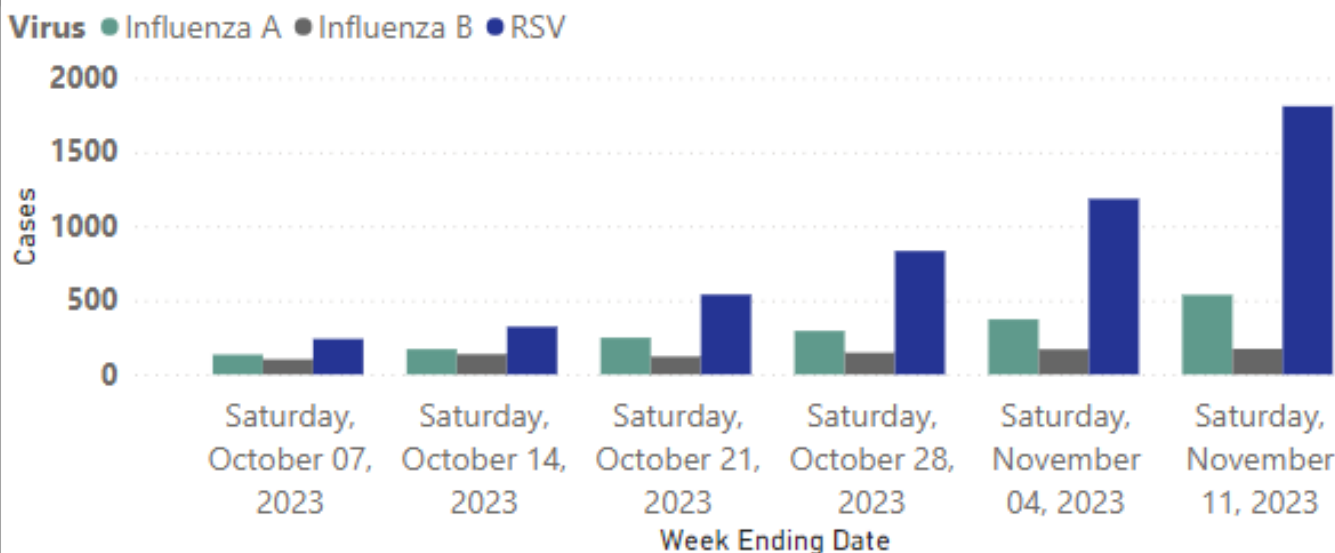
Influenza (All Types) Cases by County Reported to PA-NEDSS 10/1/23 through 11/11/2023



*Counties in gray have fewer than 5 cases. When patient address is not available (about 35% of cases), the county of the healthcare

[Download County Case Counts](#)

Cases by Week Reported into PA-NEDSS



[Cover Page](#)

Weekly Summary

[Season Comparison](#)

[Emergency Department Surveillance](#)

[Hospitalizations](#)

[Mortality](#)

[Data Sources](#)

[Other Resources](#)



ECRI

The Most Trusted
Voice in Healthcare

On-Site Staff Training Opportunities

Dementia Simulation, Falls, IPC, and Medication Administration Safety ESCAPE ROOMS!

Presented by: Jean Harpel, ECRI Operations Manager PSQR Aging Services

Dementia Simulation



WALK A MILE IN THEIR SHOES

Highlights:

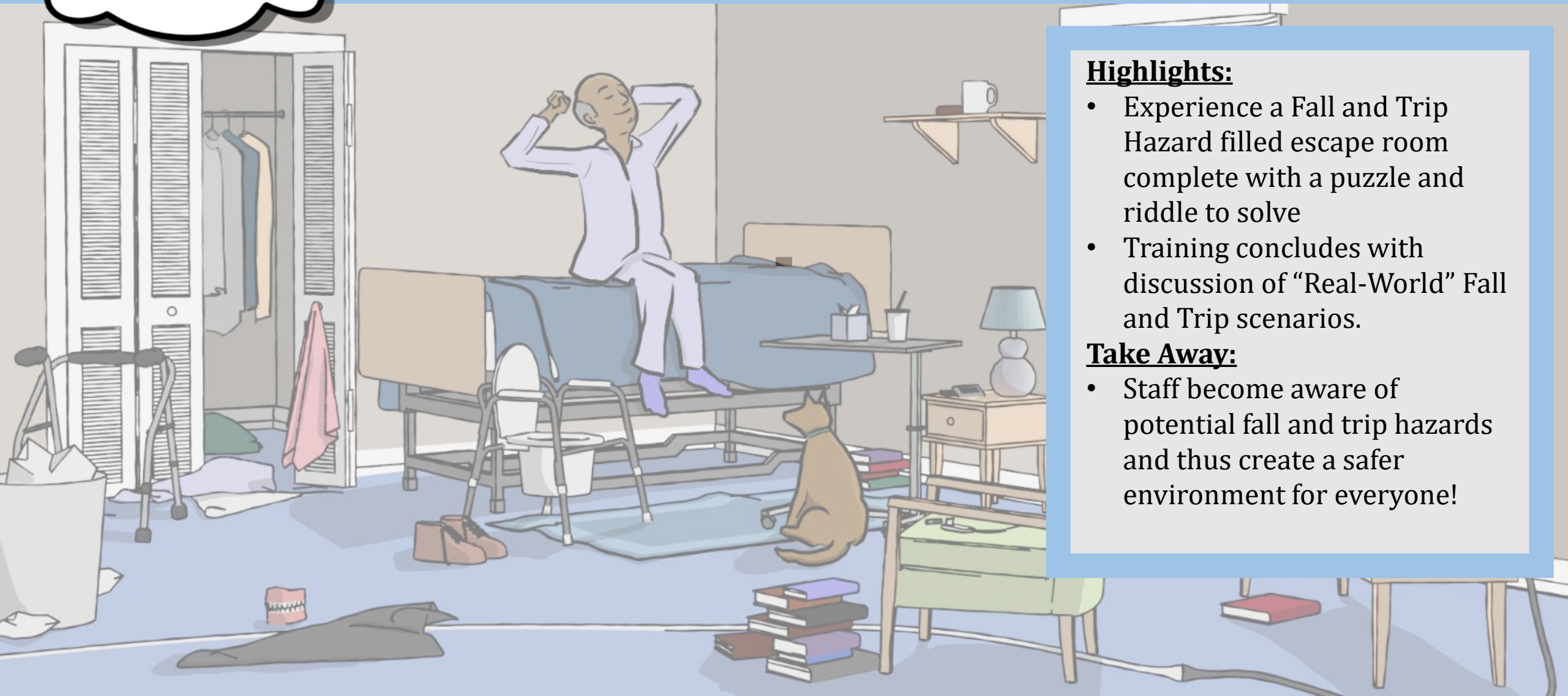
- Hands-on training simulation with the use of sensory reducing tools to perform simple day-to-day tasks
 - Simulating the following:
 - Loss of hearing and increased confusion
 - Loss of Central and peripheral vision
 - Loss of Sensory nerves and fine motor skills
 - Increased feelings of frustration and over stimulation
- Training concludes with discussion of “Real-World” Dementia scenarios.

Take Away:

- Staff create a positive environment for those with dementia.

ESCAPE ROOM
TEAM BUILDING

The RISE and Falls Escape Room



Highlights:

- Experience a Fall and Trip Hazard filled escape room complete with a puzzle and riddle to solve
- Training concludes with discussion of “Real-World” Fall and Trip scenarios.

Take Away:

- Staff become aware of potential fall and trip hazards and thus create a safer environment for everyone!

ESCAPE ROOM TEAM BUILDING

IPC Zombie Apocalypse Escape Room

Highlights:

- “Zombie Apocalypse” themed escape room filled with potential risks for and exposure to infection.
- Training concludes with discussion of “Real-World” IPC scenarios.

Take Away:

- Staff learn proper IPC protocol - donning, doffing and handwashing procedures.



ESCAPE ROOM TEAM BUILDING

Mission Possible: Medication Administration Safety Escape Room

Highlights:

- “Mission Possible” themed escape room with varied opportunities to safely administer medication
- Training concludes with discussion of “Real-World” Medication Administration scenarios.

Take Away:

- Staff learn proper medication administration procedure – 10 Rights, Crush/No Crush Pills, Differentiating similar meds and residents and Medication actions.

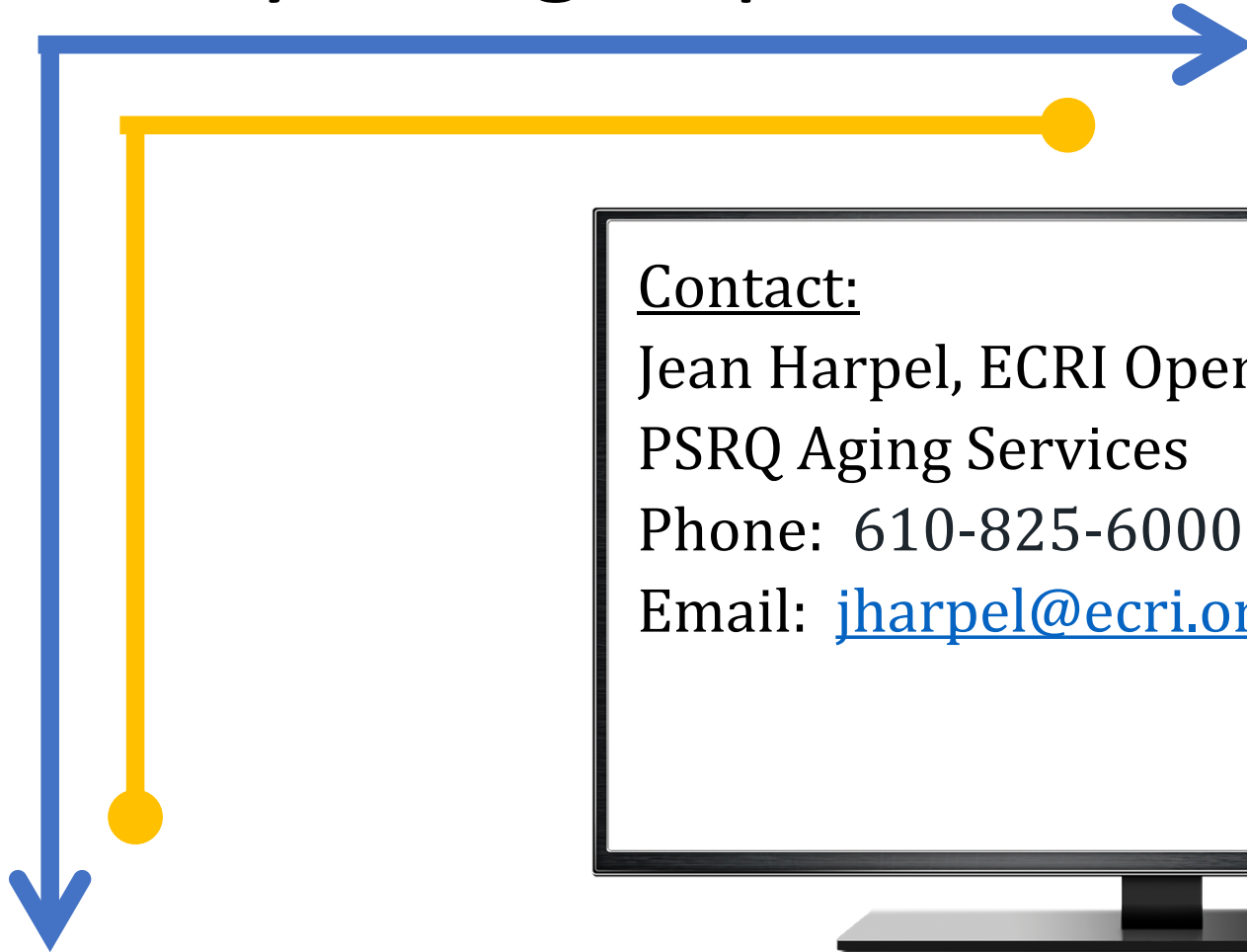
10 RIGHTS OF MEDICATION ADMINISTRATION

10 RIGHTS OF DRUG ADMINISTRATION

- ✓ **RIGHT DRUG**
- ✓ **RIGHT PATIENT**
- ✓ **RIGHT DOSE**
- ✓ **RIGHT ROUTE**
- ✓ **TIME & FREQUENCY**
- ✓ **DOCUMENTATION**
- ✓ **HISTORY & ASSESSMENT**
- ✓ **DRUG APPROACH & RIGHT TO REFUSE**
- ✓ **DRUG-DRUG INTERACTION & EVALUATION**
- ✓ **EDUCATION & INFORMATION**

©2023 ECRI. All rights reserved.

Ready to sign up?



Contact:
Jean Harpel, ECRI Operations Manager
PSRQ Aging Services
Phone: 610-825-6000 x5388
Email: jharpel@ecri.org



A black monitor with a stand. On the screen, there is contact information for Jean Harpel. To the right of the text is a green icon of a smartphone with a white speech bubble coming from it.

SCOR-LTC Survey Sign-ups: NOVEMBER 22nd Deadline!

Assess your current strengths and opportunities within your organization. The survey results are confidential, and individual facility results will only be shared with your leadership team.

What you do:

- Register your community! See the link below
- Join a 15 min Mapping Session where you tell us about your facility staff – how many and how they work together
- Promote staff participation in an anonymous 8–11-minute survey

What you get:

- Detailed insight into the drivers of cultural health and staff well-being at your facility
- Training in interpreting the data from the survey
- A debriefing session from an expert on cultural impact in healthcare settings
- Custom action plan with coaching and strategies specific to your results
- Access to individual well-being trainings that can also provide free CEUs for all staff
- Newly surveying communities will receive iPads to assist in the survey process

Interested in participating this fall?

Please fill out the "SCOR-LTC Survey Registration" by clicking the link here: [November SCOR-LTC Registration](#)

The Vizient logo is displayed in a white rectangular box. The word "vizient" is written in a lowercase, orange, sans-serif font. A registered trademark symbol (®) is located at the top right of the word.

Complete the STARR Ladder Program

Earn \$200

3 Tracks:

- Dementia Care Track
- Infection Prevention Track
- QAPI Track – NEW!!

Provide select staff with an opportunity to become facility champions through participation in the STARR ladder program with goal to have facility recognition through assignment of a new role/title. Eligible staff include medication technicians, certified nursing assistants, maintenance staff, administrative staff and nurses.

3 STARR Phases:

- Online Component geared toward your chosen track (self-paced)
- In-Person workshop along with 2-3 virtual training sessions with subject matter experts
- In-Person training where STARR Participant co-leads the training, ongoing mentorship

Participants who **complete the program** earn a \$200 Mastercard gift card

To learn more email RISEteam@pennstatehealth.psu.edu or click the link to register!



[Register Here!](#)

Register Here!



Introducing “IP Talk” Office Hours

HAPEvolve, in collaboration with Penn Medicine/Temple Health and Penn State Health LTC RISE programs, are excited to host monthly Infection Prevention (IP) Office Hours.

WHAT	IP Talk is a VIRTUAL, Multiregional IP Office Hours session that will combine IP education with the sharing of best practices.									
WHY	IP Talk is a way to support IP resiliency and assist LTC IPs in building a network of peers. We are currently pursuing continuing education so it will also be a great way to earn credit!									
WHEN	IP Talk will be held on the FIRST Friday of each Month from 12:30 – 1:30 PM for 1 hour. Tentative Schedule: <table><tr><td>October 6, 2023</td><td>January 5, 2024</td><td>April 5, 2024</td></tr><tr><td>November 3, 2023</td><td>February 2, 2024</td><td>May 3, 2024</td></tr><tr><td>December 1, 2023</td><td>March 1, 2024</td><td>June 7, 2024</td></tr></table>	October 6, 2023	January 5, 2024	April 5, 2024	November 3, 2023	February 2, 2024	May 3, 2024	December 1, 2023	March 1, 2024	June 7, 2024
October 6, 2023	January 5, 2024	April 5, 2024								
November 3, 2023	February 2, 2024	May 3, 2024								
December 1, 2023	March 1, 2024	June 7, 2024								
WHO	IP Talk speakers will include subject matter experts discussing areas of Infection Prevention based on YOUR feedback. Current topics that are being planned include vaccines, outbreak management, enhanced barrier precautions and more!									
HOW	IP Talk Monthly sessions will be held virtually on ZOOM. A registration page will be made available and sent after every IP Office Hour to receive the calendar invite. Additionally, a reminder will be sent a week prior.									

[LTC RISE Infection Prevention Office Hour Registration \(hapevolve.com\)](https://hapevolve.com)

12 Week IP Educational Offering: Introducing “12 Week IP Geek”



- We are currently pursuing CEUs for this course offering!
- “Back to Basics” IP Educational Topics aimed at supporting IP resiliency and building a network of peers
 - 6 Didactic Sessions (2 per month)
 - 3 Coaching/Networking Calls (1 per month)
 - Fun, laid back environment to learn, discuss and share ideas!
- Educational offering will be repeated in 3 cohorts throughout the year
 - Cohort 1- Sept-Nov (12 facility spots available) - **COHORT IN SESSION**
 - Cohort 2- Jan-Mar (12 facility spots available) - **REGISTRATION FULL**
 - **Cohort 3- Apr-Jun (12 facility spots available) - ENROLLING NOW!**
- Enroll for **COHORT 3** here : [LTC Rise IP Course Registration Link](#)

Emergency Management Upcoming Office Hours

November 17, 2023, from 11:00-12:00 CISA Protective Security Advisors

December 15, 2023, from 11:00-12:00 Electrical Utilities by First Energy

Zoom Link is the same each offering:

<https://haponline-org.zoom.us/j/83111533055?pwd=eHM1UHlrNHlyREgydGZLaFRUOOctJdz09>

Virtual Tabletop Exercise

- December 5, 2023, from 11:00 to 1:00
- Exercise Registration Website: [Exercise 1 Registration Penn State Health LTC RISE 2.0](#)



Long-Term Care RISE ECHO

This virtual series seeks to empower facility administration and staff to improve health outcomes for residents facing challenges related to age-friendly care.

Join us **December 14th, 2023** for our next session:

Hand Hygiene

Register below!

<https://redcap.link/LTCRISE23-24>



PennState
College of Medicine



The Bridge Center at Messiah University is hosting 8 educational courses for entry and mid-level Long-Term Care Leaders called **Leading Spirituality and Wellness in Long-Term Care.**

3rd COURSE – December 7 at 1:00 p.m.
Interfaith Dialogue for LTC Leaders

According to the Public Religion Research Institute (PRRI), most Americans encounter religious diversity at work far more frequently than in other aspects of life. Leaders need to build capacity to work effectively with people who hold views different from their own. Navigating religious diversity is critical to the work of diversity, equity, and inclusion yet it is an often-neglected dimension of that work. This course will focus on developing the capacity of interfaith leadership in the workplace.

Registration is free! Courses can be taken as a series or stand-alone events.



THE BRIDGE CENTER
FOR CONTINUING EDUCATION

[For information on this course](#)
[or to register, click here or scan QR code!](#)

For more details on the course series, go to
www.messiah.edu/bridgecenter



Peer-2-Peer Network (P2P Net)

Facilitated by Medical Reserve Corps

As part of the Penn State LTC RISE program, the South Central PA Medical Reserve Corps is offering free training in-house at your facility. MRC can come on weekdays and weekends to complete this important program for your leadership and staffing teams. Each session lasts for about an hour and can be taught several times a day to capture all shifts. **Training is offered on a first come, first served basis.**

Psychological First Aid (PFA) is an evidence-informed approach that is built on the concept of human resilience. PFA aims to reduce stress symptoms and assist in a healthy recovery following a traumatic event, natural disaster, public health emergency, or even a personal crisis. PFA addresses basic needs and reduces psychological distress by providing a caring comforting presence, and education on common stress reactions. It empowers the individual by supporting strengths and encouraging existing coping skills and also provides connections to natural support networks.

Follow this link to find a time between now and March 2024. <https://calendly.com/scpamrc/psychological-first-aid> (Weekends upon request)

Other questions? Contact Kim Lee Kenawell, MSFS, AWMA[®], CDFA[®], CRPC[®]
kkenawell@ehsf.org or 717-319-5110





In less than 10 minutes, complete the LTC RISE *FAST Form* The *Facility Access Survey Tool*



Created by your Long-Term Care RISE partners in the South Central PA region, this tool will help us gather information from multiple points-of-contact at your facility in order to quickly share resources, training, incentives and MORE to you for easy connections!

[Click here to complete the form today!](#)



No Office Hours next Friday November 24th!

