

South Central Long-Term Care RISE

Resiliency, Infrastructure, Support & Empowerment

Office Hours

October 20, 2023



**LONG TERM
CARE** RESOURCE
COLLABORATIVE

SOUTH CENTRAL
LTC RISE



PennState
College of Medicine



AGENDA

- COVID-19 Data
- RISE program spotlight: HAPevolve Emergency Management Resources
- Reminders & Opportunities
 - Penn State Smeal School of Business
 - Vizient SCOR survey
 - Messiah University
 - P2P Net
 - ECHO
 - STARR Ladder Relaunch
 - Age Friendly Health System recognition
 - Fast Form



SITUATIONAL AWARENESS

SOUTH CENTRAL REGION

LTC RISE Counties with Outbreaks

	Outbreaks	Percent of Facilities in County with Outbreak	PCH	SNF	Total in County	Outbreaks Previous Week
Bedford	1	20%	3	2	5	1
Blair	6	23%	16	10	26	8
Mifflin	2	40%	2	3	5	1
Huntingdon	1	20%	2	3	5	1
Fulton	1	50%	1	1	2	1
Juniata	1	13%	5	3	8	1
Perry	0	0%	1	3	4	0
Cumberland	4	10%	24	17	41	6
Franklin	5	17%	20	9	29	4
Adams	1	6%	11	6	17	0
Dauphin	1	3%	22	9	31	0
York	1	2%	30	16	46	1
Lebanon	2	7%	19	11	30	2
Total	26	10%	156	93	249	26
Total Facilities (PCH and SNF)				249		

SOUTH CENTRAL REGION- COUNTY COVID NEW HOSPITAL
ADMISSION RATES ON 10/19/23: CDC DATA TRACKER

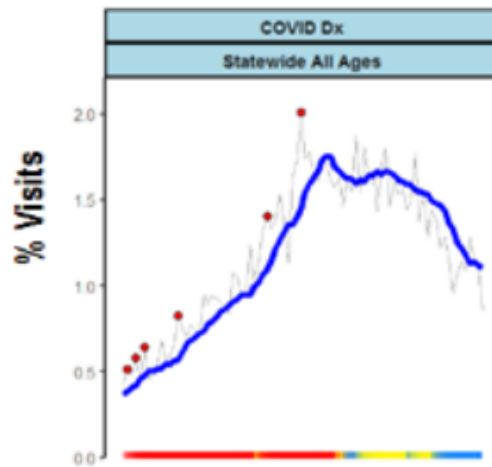
COUNTY	NEW HOSPITAL ADMISSIONS PAST WEEK	RATE PER 100,000 POPULATION
ADAMS	27	3.3
BEDFORD	26	7.0
BLAIR	26	7.0
CUMBERLAND	37	5.1
DAUPHIN	37	5.1
FRANKLIN	15	4.7
FULTON	15	4.7
HUNTINGDON	6	5.2
JUNIATA	6	5.2
LEBANON	37	5.1
MIFFLIN	6	5.2
PERRY	37	5.1
YORK	27	3.3

Last Updated 10/19/2023

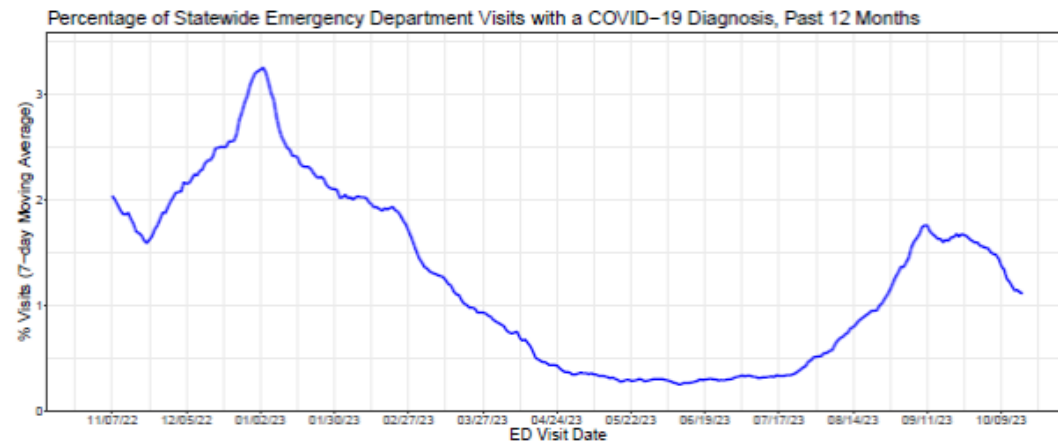
Covid-19 Syndromic Data

The syndromic system captures ED visit data from all PA hospitals.

The % of visits with COVID diagnoses are generally decreasing in all regions.

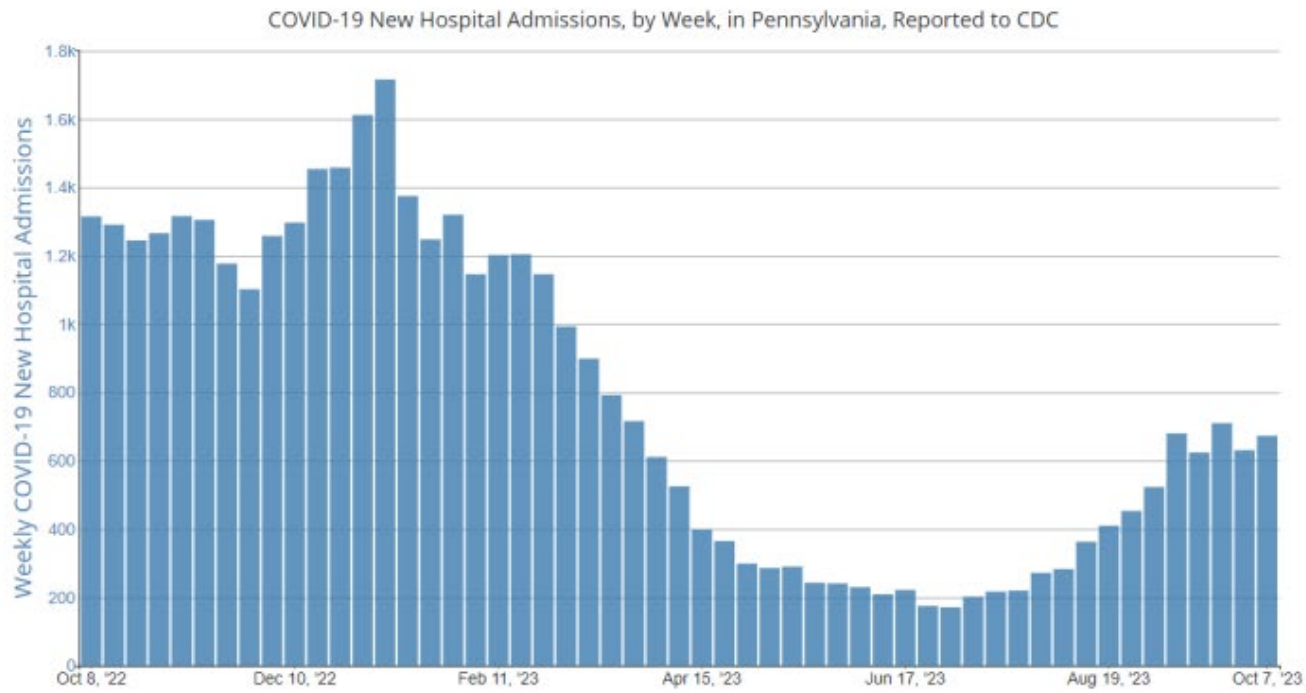


3-month trends (through 10/17/2023) in the % of ED visits that had a diagnosis code for COVID-19 infection



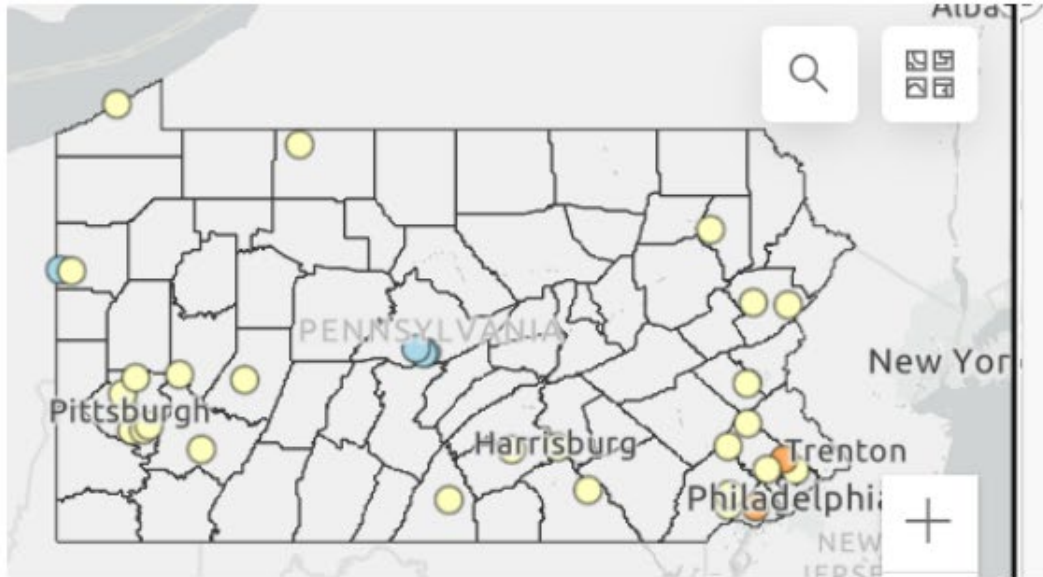
COVID-19 levels are about the same as they were in early March. They are still lower than they were at this time last year

COVID- 19 Hospitalization by PA region



Shows a small increase in new admissions statewide for the week ending Oct 7.

Wastewater Surveillance



15-Day Trend

- Large Increase
- Increase
- No Change
- Decrease
- Large Decrease
- Insufficient Data

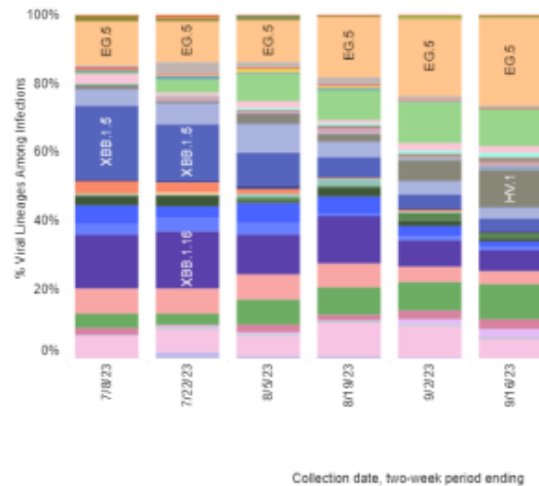
Most sites are at low or decreasing levels.

Covid-19 Variants

Weighted Estimates in HHS Region 3 for 2-Week Periods in 6/25/2023 – 10/14/2023

Hover over (or tap in mobile) any lineage of interest to see the amount of uncertainty in that lineage's estimate.

Weighted Estimates: Variant proportions based on reported genomic sequencing results



Nowcast: Model-based projected estimates of variant proportions



Nowcast Estimates in HHS Region 3 for 10/1/2023 – 10/14/2023

Region 3 - Delaware, District of Columbia, Maryland, Pennsylvania, Virginia, and West Virginia

WHO label	Lineage #	%Total	95%PI
Omicron	HV.1	25.7%	22.4-29.2%
	EG.5	22.9%	20.6-25.5%
	FL.1.5.1	13.7%	11.9-15.6%
	XBB.1.16.6	9.1%	7.6-10.8%
	XBB.2.3	3.6%	2.6-5.1%
	HK.3	3.5%	2.5-5.3%
	XBB.1.16	2.6%	2.2-3.1%
	XBB.1.16.11	2.4%	1.9-3.0%
	XBB.1.16.15	2.3%	1.7-3.1%
	XBB.1.16.1	1.8%	1.5-2.3%
	GK.1.1	1.4%	0.9-2.3%
	GF.1	1.3%	0.7-2.4%
	XBB.1.5.70	1.3%	0.8-2.1%
	XBB	1.3%	0.5-1.9%
	HF.1	1.0%	0.6-1.6%
	GK.2	1.0%	0.6-1.7%
	EG.6.1	0.7%	0.5-1.2%
	XBB.1.9.1	0.7%	0.6-0.8%
	XBB.1.5.72	0.6%	0.4-1.0%
	XBB.1.5	0.6%	0.5-0.8%
	XBB.1.9.2	0.5%	0.3-0.7%
	BA.2	0.4%	0.1-1.1%
	XBB.1.5.68	0.4%	0.2-0.6%
	CH.1.1	0.2%	0.1-0.5%
	XBB.1.5.10	0.2%	0.1-0.3%
	XBB.2.3.8	0.2%	0.1-0.4%
	XBB.1.42.2	0.1%	0.1-0.3%
	FD.1.1	0.1%	0.0-0.2%
	XBB.1.5.59	0.1%	0.0-0.1%
	FE.1.1	0.0%	0.0-0.1%
	B.1.1.529	0.0%	0.0-0.1%
	EU.1.1	0.0%	0.0-0.1%
	XBB.1.5.1	0.0%	0.0-0.0%
	BQ.1	0.0%	0.0-0.0%
	FD.2	0.0%	0.0-0.0%
Other	Other*	0.1%	0.0-0.1%

* Enumerated lineages are US VOC and lineages circulating above 1% nationally in at least one 2-week period. "Other" represents the aggregation of lineages which are circulating <1% nationally during all 2-week periods displayed.
 a. BA.1, BA.3 and their sublineages (except BA.1.1 and its sublineages) are aggregated with B.1.1.529. Except BA.2.12.1, BA.2.75, XBB and their sublineages. BA.2 sublineages are aggregated with BA.2. Except BA.2.75.2, CH.1.1 and BH.1. BA.2.75 sublineages are aggregated with BA.2.75. Except BA.4.6, sublineages of BA.4 are aggregated to BA.4. Except BF.7, BF.11, BA.5.2.6, BC.1 and BG.1.1, sublineages of BA.5 are aggregated to BA.5. Except the lineages shown and their sublineages, sublineages of XBB are aggregated to XBB. Except XBB.1.5, XBB.1.5.10, FD.2, EU.1.1, XBB.1.5.68 and XBB.1.5.70 sublineages of XBB.1.5 are aggregated to XBB.1.5. Except FL.1.5.1, sublineages of XBB.1.5.1 are aggregated to XBB.1.5.1. Except XBB.1.16.1, XBB.1.16.11, XBB.1.16.15, XBB.1.16.15 sublineages of XBB.1.16 are aggregated to XBB.1.16, sublineages of XBB.1.42.2 are aggregated to XBB. Except FE.1.1, sublineages of XBB.1.16.1 are aggregated to XBB. For all the other lineages listed, their sublineage are aggregated to the listed parental lineages respectively. Previously, FL.1.5.1, OE.1, ED.6.1 and HV.1, FD.1.1, XBB.2.3.8, HF.1, GK.2, GK.1.1, HK.3 was aggregated to XBB.1.5.1, XBB.2.3.8, XBB.1.9.2, XBB.1.5.15, XBB.2.3, XBB.1.16.13, XBB.1.5.70 and XBB.1.9.2.5.1.1 respectively. Lineages BA.2.75.2, XBB, XBB.1.5, XBB.1.5.1, XBB.1.5.10, FD.2, XBB.1.8.1, XBB.1.6.2, XBB.1.16, XBB.1.16.1, XBB.2.3, BH.1, BA.4.6, BF.7, BF.11, BA.5.2.6, BD.1.1, EU.1.1, XBB.1.5.68, FE.1.1, EG.5, XBB.1.5.72, FL.1.5.1, OE.1 EG.6.1, XBB.1.16.11, FD.1.1, XBB.1.5.70, XBB.2.3.8, HV.1, XBB.1.42.2, GK.2, HF.1, XBB.1.16.15, GK.1.1 and HK.3 contain the spike substitution R345T.

In the actual data, EG.5 was the most prevalent subvariant, and HV.1 was increasing the fastest.

The projections estimate that HV.1 is currently the most prevalent variant (26%), with EG.5 beginning to subside.

Fortunately the updated COVID vaccine is expected to be reasonably effective against these variants.

Why you should participate in the Emergency Management Improvement Program

Office Hours 10/20/2023



Do you feel like any of these?



Areas Where the Emergency Management Improvement Program May Help



Compliance with local, state, and federal regulatory requirements



Understanding of emergency management tools, requirements and best practices



Capacity to understand, prepare, and respond to emergencies



Testing of your plans through regional tabletop exercises

Interested in learning
more?

Contact Us

Matt Gallardo mgallardo@hapevolve.com

Ryan Weaver rweaver@haponline.org



An Opportunity for RISE Providers

Leadership Programs – Tailored for LTC

From - Penn State Executive & Professional Programs

- What: Program series offered as a service to the RISE South Central region at no fee!
- Who: LTC leaders and managers
- Why: The short courses have been tailored to address the LTC community and people leaders hope to learn more about current issues in leadership/management

Leading and Managing a **Long-Term Care Team**

Series Dates: Oct 25, Nov 1, 21, & 29, Dec 6 & 13, 2023

Time: 1:00-4:15 PM (EST)

CEs Available

If you lead or manage people, you'll benefit from this comprehensive series. Interactive sessions focus on topics that matter most to you: goal attainment, recruitment/retention, and organizational success.

This course will help you:

- Use emotional intelligence to be a more effective leader
- Define critical steps in performance management and how to use them to drive success
- Assess teams to harness strengths and increase group productivity.

[Register here!](#)





Introducing “IP Talk” Office Hours

HAPevolve, in collaboration with Penn Medicine/Temple Health and Penn State Health LTC RISE programs, are excited to host monthly Infection Prevention (IP) Office Hours.

WHAT	IP Talk is a VIRTUAL, Multiregional IP Office Hours session that will combine IP education with the sharing of best practices.									
WHY	IP Talk is a way to support IP resiliency and assist LTC IPs in building a network of peers. We are currently pursuing continuing education so it will also be a great way to earn credit!									
WHEN	IP Talk will be held on the FIRST Friday of each Month from 12:30 – 1:30 PM for 1 hour. Tentative Schedule: <table><tr><td>October 6, 2023</td><td>January 5, 2024</td><td>April 5, 2024</td></tr><tr><td>November 3, 2023</td><td>February 2, 2024</td><td>May 3, 2024</td></tr><tr><td>December 1, 2023</td><td>March 1, 2024</td><td>June 7, 2024</td></tr></table>	October 6, 2023	January 5, 2024	April 5, 2024	November 3, 2023	February 2, 2024	May 3, 2024	December 1, 2023	March 1, 2024	June 7, 2024
October 6, 2023	January 5, 2024	April 5, 2024								
November 3, 2023	February 2, 2024	May 3, 2024								
December 1, 2023	March 1, 2024	June 7, 2024								
WHO	IP Talk speakers will include subject matter experts discussing areas of Infection Prevention based on YOUR feedback. Current topics that are being planned include vaccines, outbreak management, enhanced barrier precautions and more!									
HOW	IP Talk Monthly sessions will be held virtually on ZOOM. A registration page will be made available and sent after every IP Office Hour to receive the calendar invite. Additionally, a reminder will be sent a week prior.									

SCOR-LTC Survey Sign-ups Ending!

Assess your current strengths and opportunities within your organization. The SCOR-LTC survey is designed specifically for post-acute and long-term care settings. **The survey results are confidential**, and individual facility results will only be shared with your leadership team.

What you do:

- Register your community! See the link below
- Join a 15 min Mapping Session where you tell us about your facility staff – how many and how they work together
- Promote staff participation in an anonymous 8–11-minute survey

What you get:

- Detailed insight into the drivers of cultural health and staff well-being at your facility
- Training in interpreting the data from the survey
- A debriefing session from an expert on cultural impact in healthcare settings
- Custom action plan with coaching and strategies specific to your results
- Access to individual well-being trainings that can also provide free CEUs for all staff
- Newly surveying communities will receive iPads to assist in the survey process

Interested in participating this fall?

Please fill out the "SCOR-LTC Survey Registration" by clicking the link here: [November SCOR-LTC Registration](#)

The Vizient logo is displayed in a white rectangular box. The word "vizient" is written in a lowercase, sans-serif font, with the letters "v", "i", "z", and "e" in orange, and "n", "t", and the registered trademark symbol in black.

The Bridge Center at Messiah University is hosting 8 educational courses for entry and mid-level Long-Term Care Leaders called **Leading Spirituality and Wellness in Long-Term Care.**

2nd COURSE – November 2 at 1:00 p.m.
The Impact of Listening on Spirituality and Leadership

We are all created to connect with others. We believe it is through listening - compassionately, empathetically, intentionally - that we can be better people and form better connections. And in being better people, we will be better partners, parents, friends, colleagues, managers, and leaders. We believe listening well is where it all starts, and we want to help workshop attendees grow in that understanding.

Registration is free! Courses can be taken as series or stand-alone events.



THE BRIDGE CENTER
FOR CONTINUING EDUCATION

[For information on this course](#)
[or to register, click here or scan QR code!](#)

For more details on the course series, go to
www.messiah.edu/bridgecenter



Peer-2-Peer Network (P2P Net)

Facilitated by Medical Reserve Corps

Objective: to offer immediate, on-the-spot support to LTC employees who experience traumatic events in the workplace. Traumatic events can be anything from bullying to the aftershocks still being felt from COVID in healthcare.

The focus is on fostering an environment where employees feel seen, heard, and cared for in those critical moments immediately following a traumatic event.

Participants of peer-to-peer teams (“P2P Net”) will be trained in the fundamentals of Critical Incident Stress Management (CISM).

Want to know more?

Contact Kim Lee Kenawell, MSFS, AWMA[®], CDFA[®], CRPC[®]

kkenawell@ehsf.org

717-319-5110



Long-Term Care RISE ECHO

This virtual series seeks to empower facility administration and staff to improve health outcomes for residents facing challenges related to age-friendly care.

Join us October 26th, 2023 for our next session:

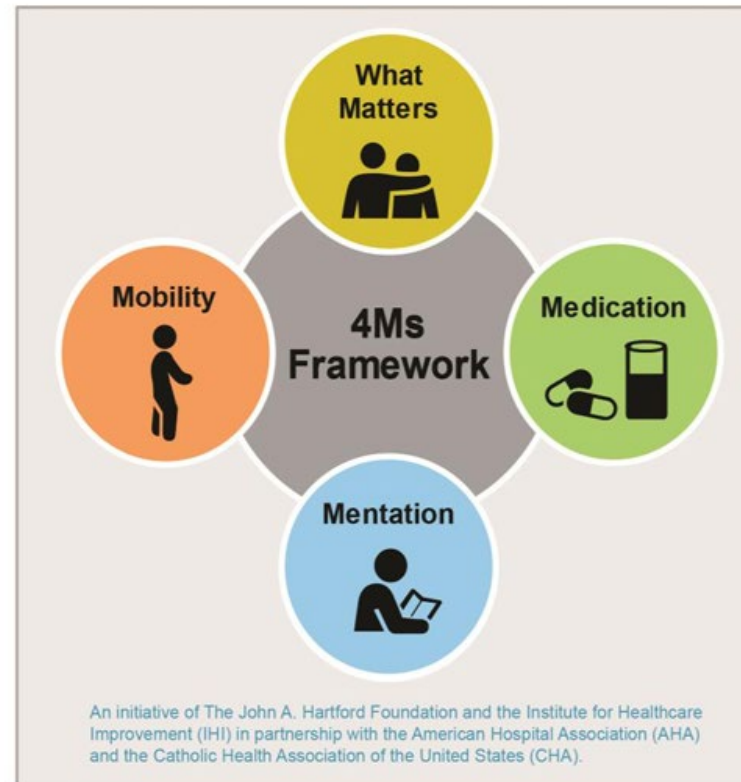
Emergency Management: Exercise Considerations in LTC

Register below!

<https://redcap.link/LTCRISE23-24>

Interested in Taking the Next Step to Become an Age Friendly Nursing Home or Personal Care Home?

- Through the RISE grant, our partners at ECRI will assist you in the steps outlined to gain Level 1 recognition!
- Ongoing support can be offered to set you up to achieve Level 2 recognition as well!
- Email jharpel@ECRI.org



What Matters

Know and align care with each older adult's specific health outcome goals and care preferences including, but not limited to, advance care planning and goals of care, and across settings of care.

Medication

If medication is necessary, use Age-Friendly medication that does not interfere with What Matters to the older adult, Mobility, or Mentation across settings of care.

Mentation

Prevent, identify, treat, and manage dementia, depression, and delirium across settings of care.

Mobility

Ensure that older adults move safely every day in order to maintain function and do What Matters.

The Return of the STARR Ladder Program!

The South Central LTC RISE Team is excited to be re-launching our STARR Ladder Program in the coming weeks!

3 Tracks:

- Dementia Care Track
- Infection Prevention Track
- QAPI Track – NEW!!

Provide select staff with an opportunity to become facility champions through participation in the STARR ladder program with goal to have facility recognition through assignment of a new role/title. Eligible staff include medication technicians, certified nursing assistants, maintenance staff, administrative staff and nurses.

3 STARR Phases:

- Online Component geared toward your chosen track (self-paced)
- In-Person workshop and training with subject matter experts for STARR Participants
- In-Person training with STARR Participants as leaders

Questions? Email us! RISEteam@pennstatehealth.psu.edu



[Register Here!](#)



In less than 10 minutes, complete the
LTC RISE *FAST Form*
The *Facility Access Survey Tool*



Created by your Long-Term Care RISE partners in the South Central PA region, this tool will help us gather information from multiple points-of-contact at your facility in order to quickly share resources, training, incentives and MORE to you for easy connections!

[Click here to complete the form today!](#)